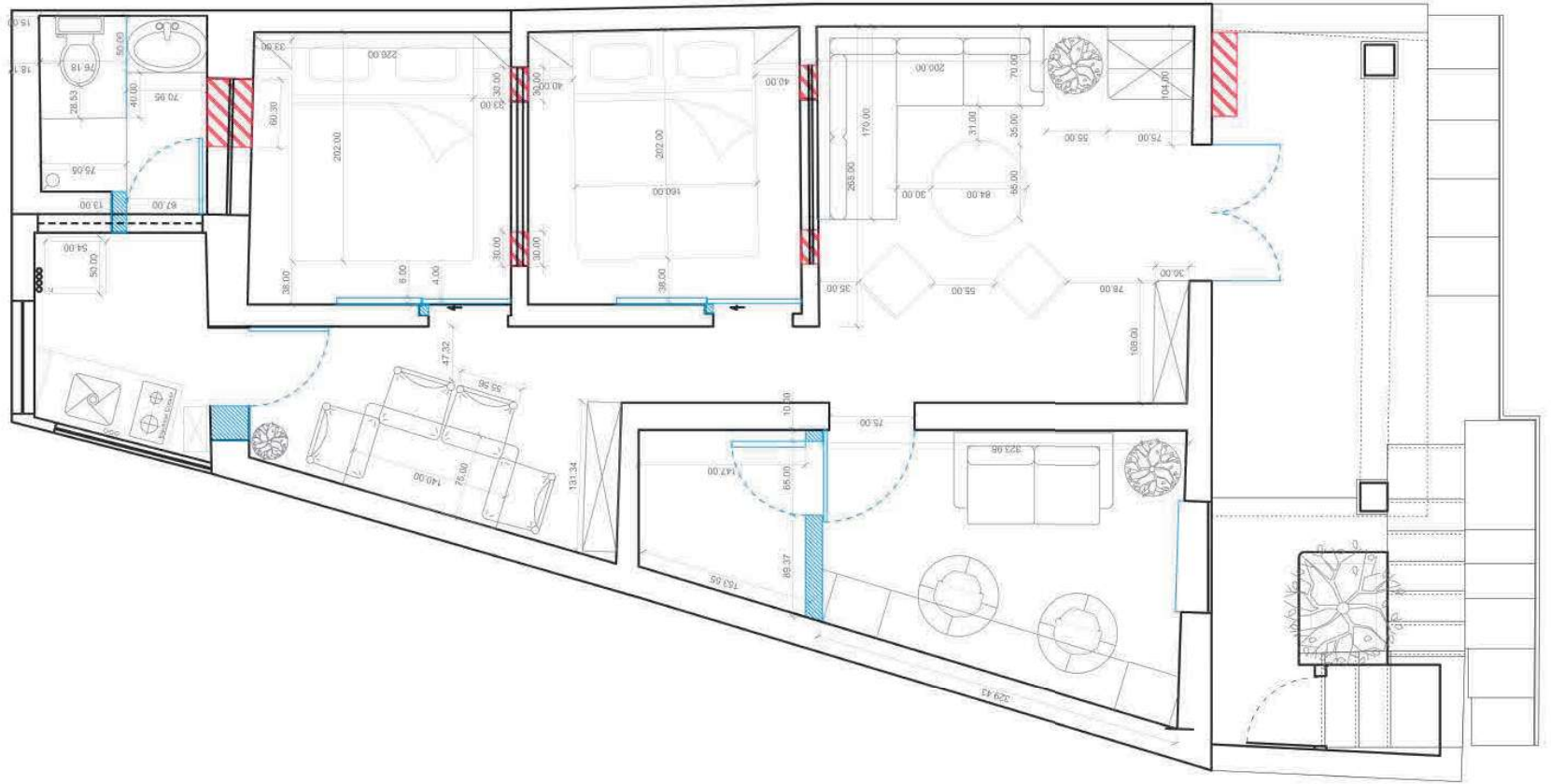


Removed
Added



As-Designed Plan



Layout Changes

The door opening will be changed to open to the outside.

The Window towards the room side will be enlarged by 30 cm on the 2 sides

As you step inside the house, the first thing you notice sets the tone for your initial impression. Think of a summer getaway - all you crave is relaxation. That's where the calming natural tones and shades of blue come in. They guide you through the entrance and living room to a simple yet incredibly comfy space, perfect for family gatherings.

Living Room/ Entrance Zone





Layout Changes

A wall will be added to create a new storage space.

The window sill will be enlarged and transformed to a seating platform.

When we crafted the home office, our approach revolved around the entire family unit rather than individual members. This led us to conceive a workspace that accommodates each family member independently or collectively. Whether you prefer collaborating at the desk with your partner or the kids gravitate towards reading by the window or playing on the couch – every preference was considered. It's a dynamic zone that fosters productivity and togetherness for the whole family.

Home Office





Right at the heart of the house lies a space that beautifully bridges the kitchen and the living room. It's not just a physical link but a charming transition between two distinct styles. Imagine authentic tiles gracing the floor beneath a warmly inviting wooden dining table and an original glass cabinet. Here, the spotlight is on nature's own palette of soft, neutral tones and the use of organic materials, creating a seamless and captivating connection.

Dinning Area





Layout Changes

The window length will be enlarged- by 30 cm from each side to let more light into the room.

The room door will be changed to a sliding wooden door.

Step into the bedroom, and its silent whisper is a comforting “Sleep well.” This tranquil space envelops you in a natural embrace, employing serene neutral hues and materials that set the stage for ultimate relaxation, guiding you towards the realm of dreams. To maximize functionality, a double bed (160 * 200) with convenient built-in drawers takes center stage, ensuring ample storage while maintaining the serene ambiance.



Guest Bedrooms



Layout Changes

The Door width will be changed from 100cm to 70cm.

Despite the limited space, we made sure to pack in all the kitchen essentials. We embraced a modern perspective, using modular structures to maximize every inch for practicality. The main cabinet features a built-in sink, refrigerator, and electric cooker, cleverly designed for efficient storage. A mobile table provides extra utility, accompanied by a compact washing machine. To infuse life into the area and sync it with the overall vibe of the house, we adorned the wall with decorative tiles.

Kitchen





Layout Changes

The Bathroom appliance will be renewed.

The tiles and finishes will be changed.

The door width will be decreased by 13cm to enlarge the shower space.

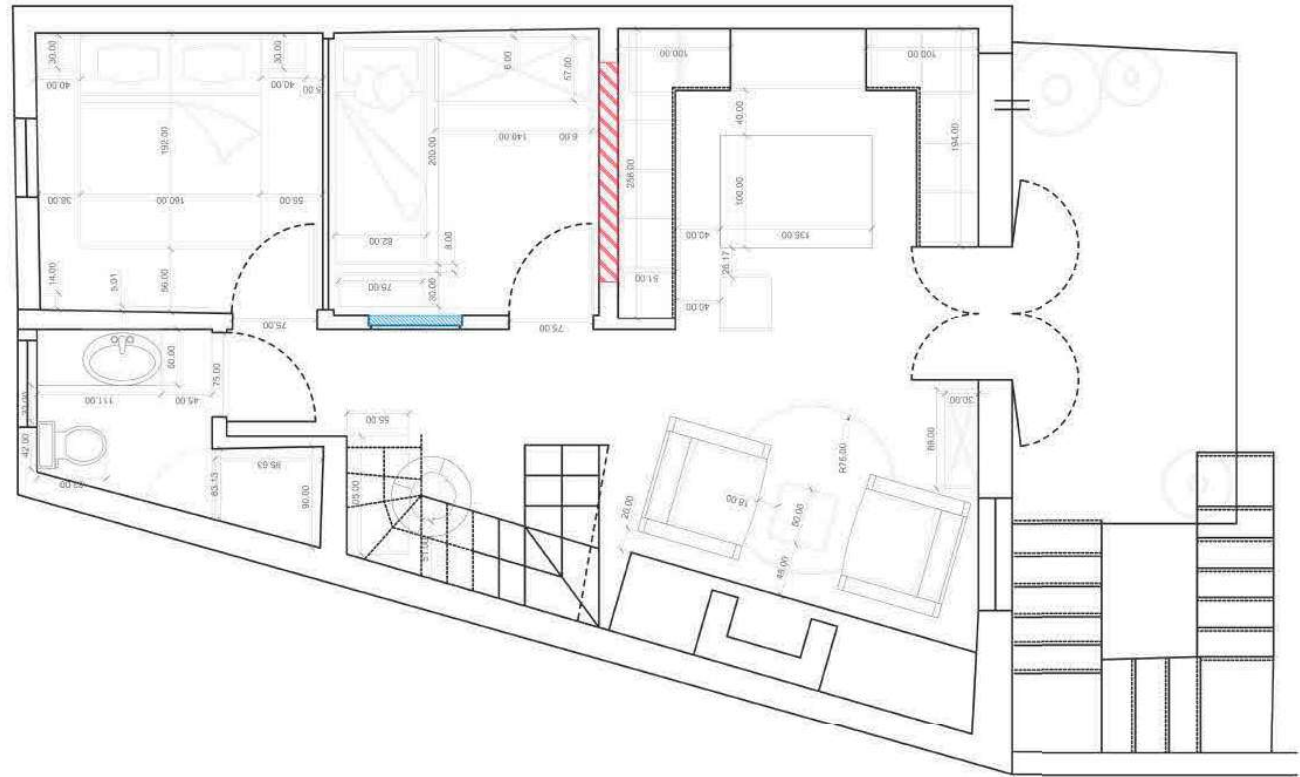
Now, let's talk about the bathroom, where a unique feature takes center stage: the pebble shower wall. This captivating element brings the essence of the sea right into your space, with its array of colors and maritime charm. And guess what? We're extending the decorative tiles from the kitchen into the bathroom, creating a seamless connection that unifies these two areas beautifully.

Bathroom



Removed

Added



As-Designed Plan - 1st Floor



Layout Changes

New window will be opened towards the central bedroom.

Step into the living room and let the soothing rustic and natural tones wrap around you. The calming blue hues are echoed in the ceiling beams, adding a unique touch. On one wall, there's a special display – a collection of 12 pottery plates, each painted by the family during their visits, forming a wall of cherished memories.

Living Room





Layout Changes

New tiles will be installed in the bathroom floor and walls

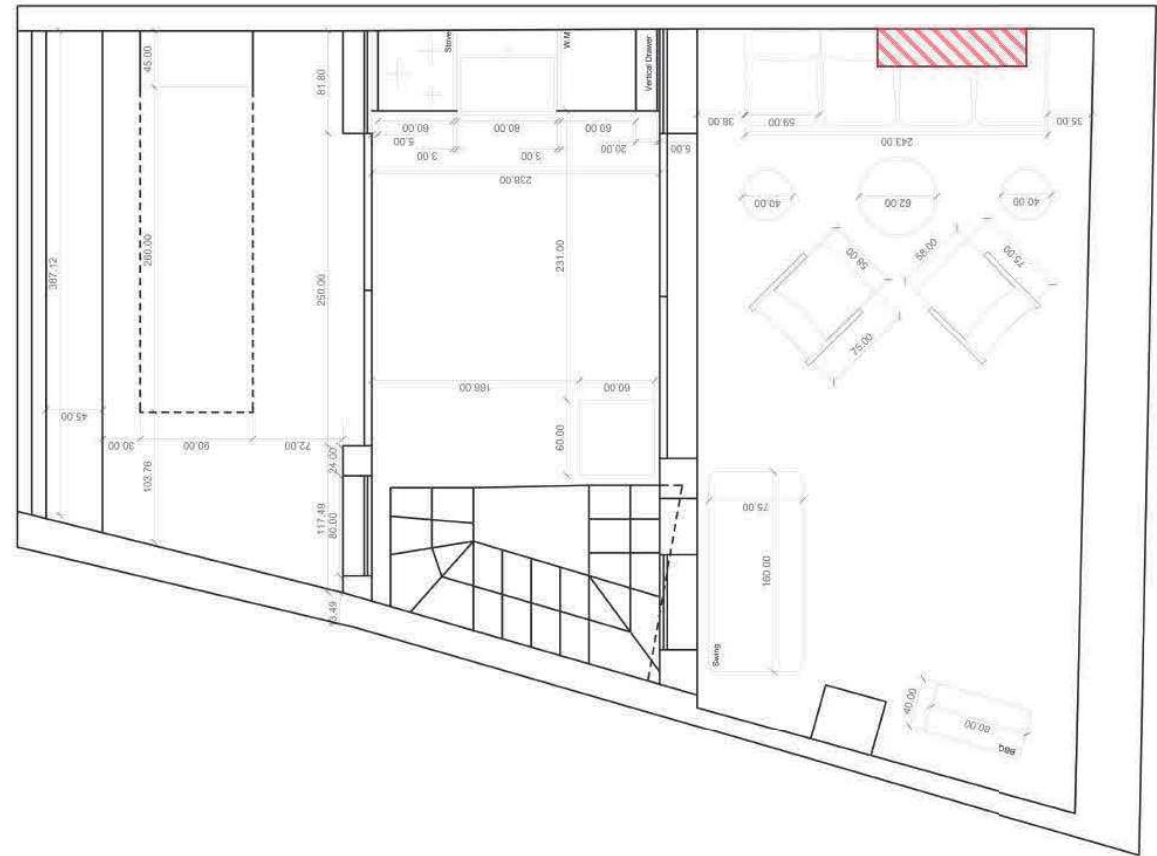
The bathroom on the first floor maintains a visual connection with the ground floor through its design elements. The decorative tiles and pebble shower floor establish a cohesive link, while a larger washing basin serves a dual purpose by offering both functionality and additional storage space.

Bathroom



Removed

Added



As-Designed Plan - Terrace



Layout Changes

A built-in seating will be installed under the window, with a storage inside it.

Under the window, a built-in seating area will be nestled, cleverly designed with hidden storage within. For dining flexibility, an expandable table ranging from 90cm to 305cm will take center stage, accommodating gatherings of up to 10 people with ease. To infuse a touch of nature, the ceiling will boast reed and bamboo elements, adding a charming organic feel. And for an ingenious space-saving trick, foldable chairs will find their place on the wall, ensuring they're handy when needed and out of sight when not.

Multi-Function





The terrace truly shines with its sense of openness, a defining characteristic that comes to life through the choice of side chairs crafted from reed-like materials. These chairs offer a diverse range of options, catering to every family member's comfort. Adding a touch of playfulness, a small swing is tucked beside the seating area, perfect for relishing sea views while enjoying a refreshing drink. And for those memorable family get-togethers, we've got you covered with a dedicated BBQ zone, primed to make your special occasions even more delightful.

Terrace





You'll find the kitchen fully equipped with all the essential appliances. At the heart of the terrace level, there's a minimalist yet timeless kitchen design, predominantly dressed in soothing white tones, tastefully accentuated by elegant gold handles. We're holding onto the existing tiles, a nod to their authenticity and local charm, ensuring their unique character remains preserved.

Kitchen

